

JUNGFRAU

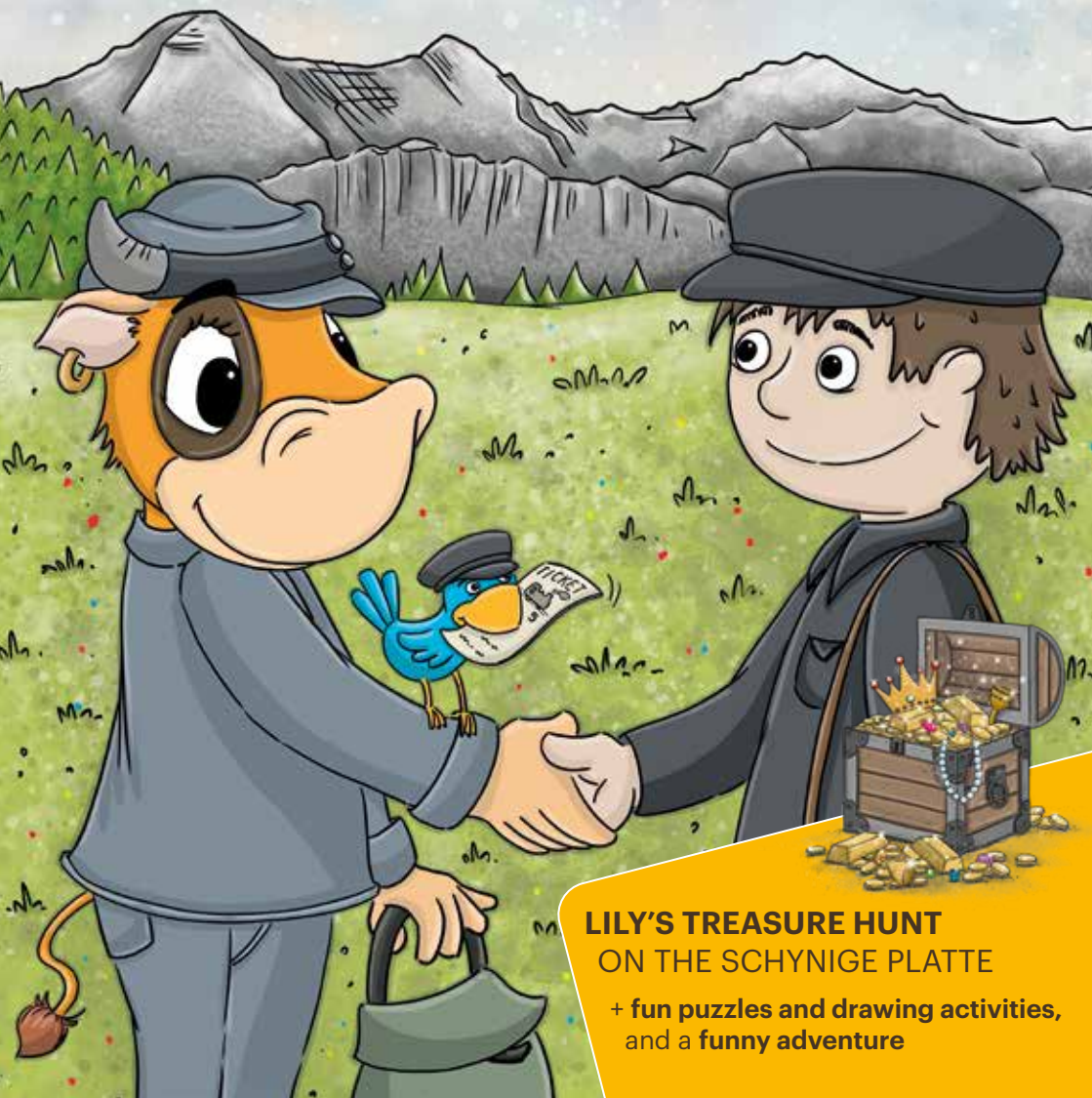
TOP OF EUROPE



Lilys

ADVENTURE

EDITION 8



LILY'S TREASURE HUNT
ON THE SCHYNIGE PLATTE

+ fun puzzles and drawing activities,
and a funny adventure



Hello,
I'm Lily!



**Welcome to the
Jungfrau Region.**

I'm delighted that you're visiting me in the beautiful Jungfrau Region. There are so many different things to do here.

From trips into the countryside to train rides on the old locomotives.

From 1893 to the end of 1913, the trains were pulled up the Schynige Platte by steam engines. Since 1914, guests have been transported up the mountain by electric locomotives.

The train journey from Wilderswil to the Schynige Platte takes about an hour. One very special experience is the intermediate station at Breitlauenen, where they serve heavenly cakes and delicious cheese platters and the views are wonderful.

I get to join you on one of these journeys, and I'm even allowed to stand at the front in the driver's cabin. Wow, what an experience! Something I also notice is how many different people and jobs are needed to make this trip a cool experience. I'll show you a few of these jobs and perhaps you'll be able to discover lots more yourself.

Of course this magazine contains another of my adventures and plenty of fun and exciting puzzles.

It's great to see you.
Have fun discovering my home!

Your

Lily



JUNGFRAU
TOP OF EUROPE

PUBLICATION DETAILS

Publisher Jungfrau Bahnen Management AG, Harderstrasse 14, 3800 Interlaken
Editorial office/management Jungfrau Bahnen Management AG, Damaris Isenschmid
Design/graphics/illustrations illugraphic.ch, Jacqueline & Daniel Kauer
Readers' correspondence Jungfrau Bahnen Management AG, Harderstrasse 14, 3800 Interlaken, lily@jungfrau.ch, jungfrau.ch/lily



Loose screws on the locomotive

It's time to take a ride on the locomotive up to the Schynige Platte. What a great experience. But before the train can set off, the mechanic has to check all the screws. Oh dear, a few of them are loose.

All six-sided nuts need to be tightened by hand. How many are there?



Solution: 9 nuts



Heavenly cakes

Lily loves freshly baked cakes. At the intermediate station in Breitlauenen, she's spoilt for choice. Should she try a tasty fruit flan or a cheese platter? Or perhaps both? Colour Lily and her friends in as they tuck into all the delicious treats.



Lily's Treasure Hunt

Do you love solving puzzles as much as I do? Great! Because you can go on the exciting treasure hunt trail on the Schynige Platte again this year. And what's more, there are lots of new puzzles to solve.

HOW DOES THE TREASURE HUNT WORK?

On the Schynige Platte, there are 9 treasure hunt posts along the hiking trail. The start is at the photo point. At each post, you have to solve a puzzle in order to find the correct letters for the solution word. Write each letter in the box that corresponds to the number of the post on the 'Treasure map'. You can find this on the next page. The last post is at the Schynige Platte Panorama Restaurant. Once you have found the solution word, you can pick a treasure item from the treasure chest and drop your entry form into the competition box. By doing so, you will take part in a great prize draw.

If you have any questions, simply ask the Schynige Platte staff. They will be more than happy to help you.

Jamadu and I wish you lots of fun and success!



Get to know me!

On Lily Family Day, I'll be on the Schynige Platte in person and am really looking forward to meeting you there on 31 August 2024.

You can find out more about me at: jungfrau.ch/lily

Lily's TREASURE MAP



ENTRY FORM

Solution word

Enter the correct letter in the box that corresponds to the number of the post.

9	7	4	1	5	2
6	3	8			

Your details

First name

Surname

Street

Postcode/Town or city

Country

E-mail

Age

I'd like to stay in touch with Lily

If you would like to send in your answer, you can do so by post to: Jungfrauabnen, Direktion, Harderstrasse 14, 3800 Interlaken or by e-mail to lily@jungfrau.ch.

The prize draw will be held on 20 October 2024.

Winners will be notified in writing. No correspondence will be entered into with regard to the prize draw. There are no cash alternatives. All decisions are final.

WHAT DO YOU DO NEXT?

1. You show the solution word in the Schynige Platte Panorama Restaurant, where you can then choose a **piece of treasure from the treasure chest**.
2. Afterwards, you can **drop your entry form into the competition box** and so take part in our prize draw.



Lily fan merchandise

Did you know? There are lots of fantastic Lily products that you can buy in our **Top of Europe shops**. Here's a small selection:



Happy mug

A cool Lily mug for little connoisseurs.

Art. no. B-Lily-2 **CHF 8.80**



Tricky puzzle

150-piece jigsaw puzzle for patient people.

Art. no. 6500-LIL **CHF 8.80**



Slide puzzle

Puzzle of Lily on the Schynige Platte.

Art. no. 2088-LIL **CHF 5.80**



Lily colour pencils

18 natural-wood colouring pencils.

Art. no. ST13.684 **CHF 9.80**



Lily notebook

Practical, spiral-bound notebook.

Art. no. SN-LILY-02 **CHF 4.80**



Practical eraser

Giant waving Lily eraser.

Art. no. 4190-LIL **CHF 3.80**



Lily soft toy

Cute Lily soft toys in three different sizes.

Lily large, approx. 45cm Art. no. 209045 **CHF 32.80**
Lily small, approx. 30cm Art. no. 209030 **CHF 22.80**
Lily key chain Art. Nr. 90047 **CHF 12.80**



Trauffer wooden Lily figurines

Beautiful handmade Lily figurines made of real Swiss wood.

Pilgrim figure Art. no. 8126 **CHF 34.80**
Lily with bench Art. no. 8124 **CHF 36.80**



Stylish necklace

Necklace with a Lily pendant.

Art. no. PO 51-144 **CHF 8.80**



Caps for cool kids

In two great colours.

Cap, blue Art. no. CAE/Lily/B/E **CHF 12.80**
Cap, pink Art. no. CAE/Lily/P/E **CHF 12.80**



AVAILABLE IN OUR TOP OF EUROPE SHOPS:

- JungfrauJoch - TOP OF EUROPE ◦ Grindelwald-First
- Grindelwald Terminal ◦ Flagship Store Interlaken



Cuddly Lily bear

In two great colours, approx. 20 cm high.

Bear, blue Art. no. 79.6/-LB **CHF 18.80**
Bear, pink Art. no. 79.6/-LP **CHF 18.80**

Lily COMIC At full speed up the hill



Finally! Lily is delighted that the Schynige Platte railway is running again after the winter break. But that's not all. Lily gets to accompany the train driver for a day. It will be such a cool adventure. To be on the safe side, Lily already puts on her work clothes.



First, Lily buys herself a ticket at the Wilderswil ticket office.

The friendly lady even gives her a children's ticket and a cool puzzle book.



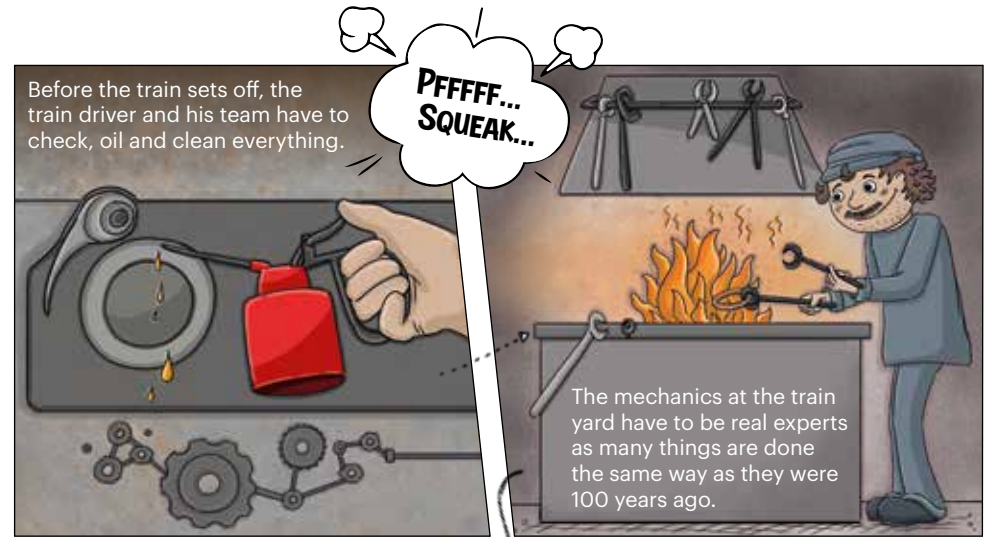
Yay, the train is coming!



The conductor checks Lily's ticket and wishes her a good trip.

But she isn't a normal passenger today. Today, she's allowed to ride in the driver's cabin.

I'M SO EXCITED.



Before the train sets off, the train driver and his team have to check, oil and clean everything.

The mechanics at the train yard have to be real experts as many things are done the same way as they were 100 years ago.

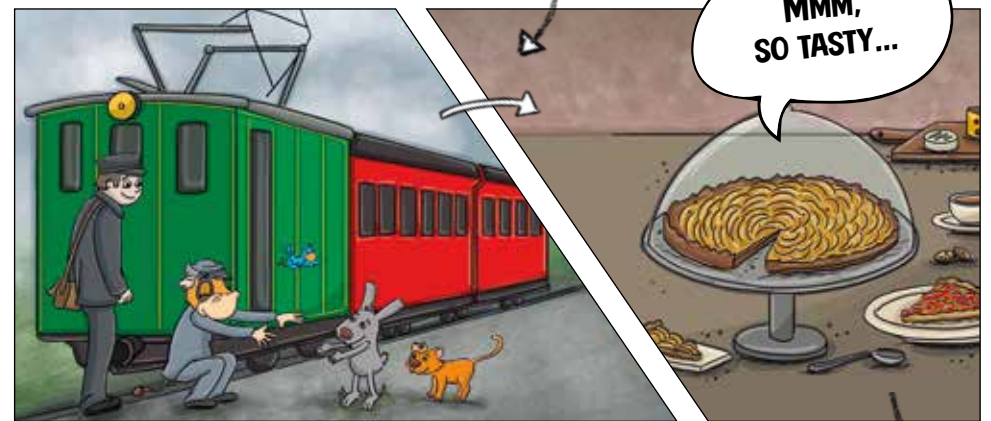


Once everything has been checked, the journey can start.



Everything is still done manually here. Even the points are switched by hand.

After a loud toot of the horn, the old train sets off. After some time it reaches the intermediate station at Breitlauenen where Lily's friends get in.



MMM, SO TASTY...

There's a cute little café here with tasty flans and cheese platters. And the owner is really nice.

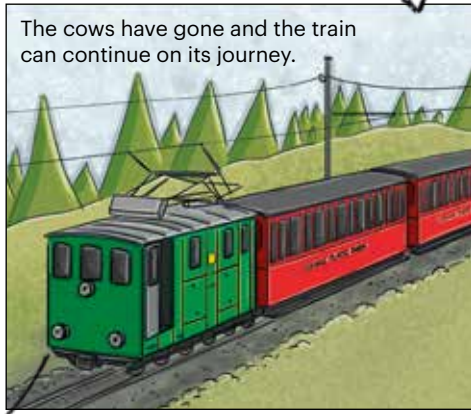


Lily and her friends help the train driver to lead the cows off the tracks.

COME ON DAISY, COME ON BUTTERCUP...



The cows have gone and the train can continue on its journey.



Once she's straightened her hat, Lily is even allowed to take the controls. She is really proud that she's now driving the old train.



Lily is amazed! She can see the Eiger, Mönch and Jungfrau and the surrounding peaks in all their glory. It's breathtaking!



After around an hour, they reach the Schynige Platte at 1,967 metres above sea level and are greeted by the sound of music and cowbells.

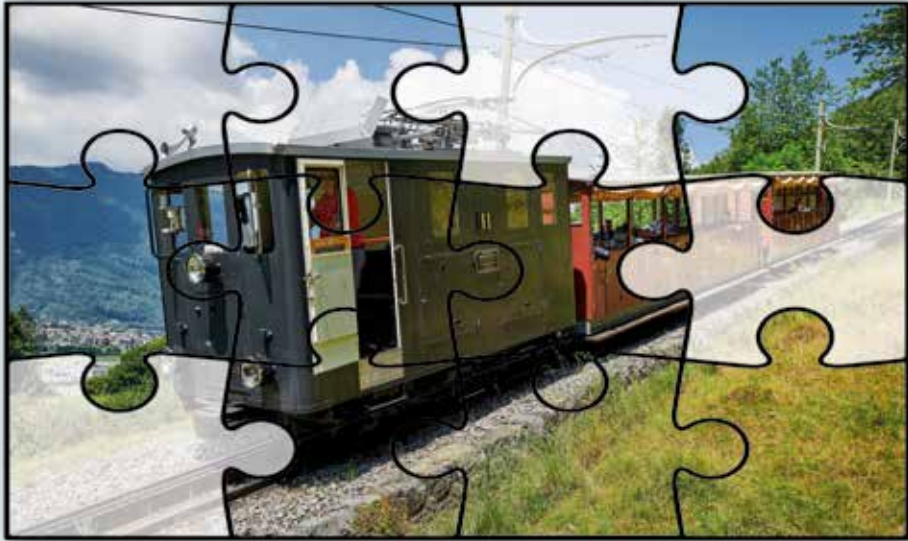


THE END

How many cows did you spot during the ride on the Schynige Platte railway?

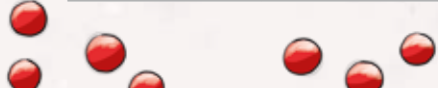
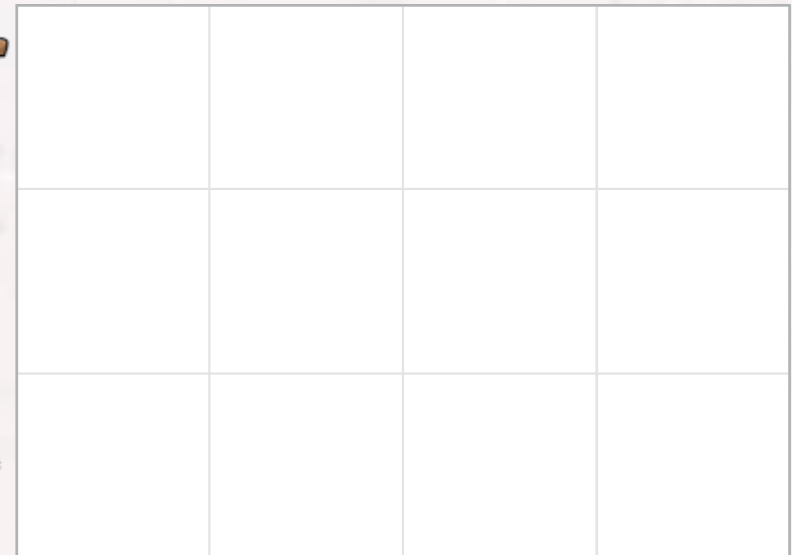
Pure nostalgia

The leisurely electric train that goes up to Schynige Platte is a real gem. However, there are three puzzle pieces missing in this picture. **Can you work out which ones? Draw a line to connect them to the puzzle.**

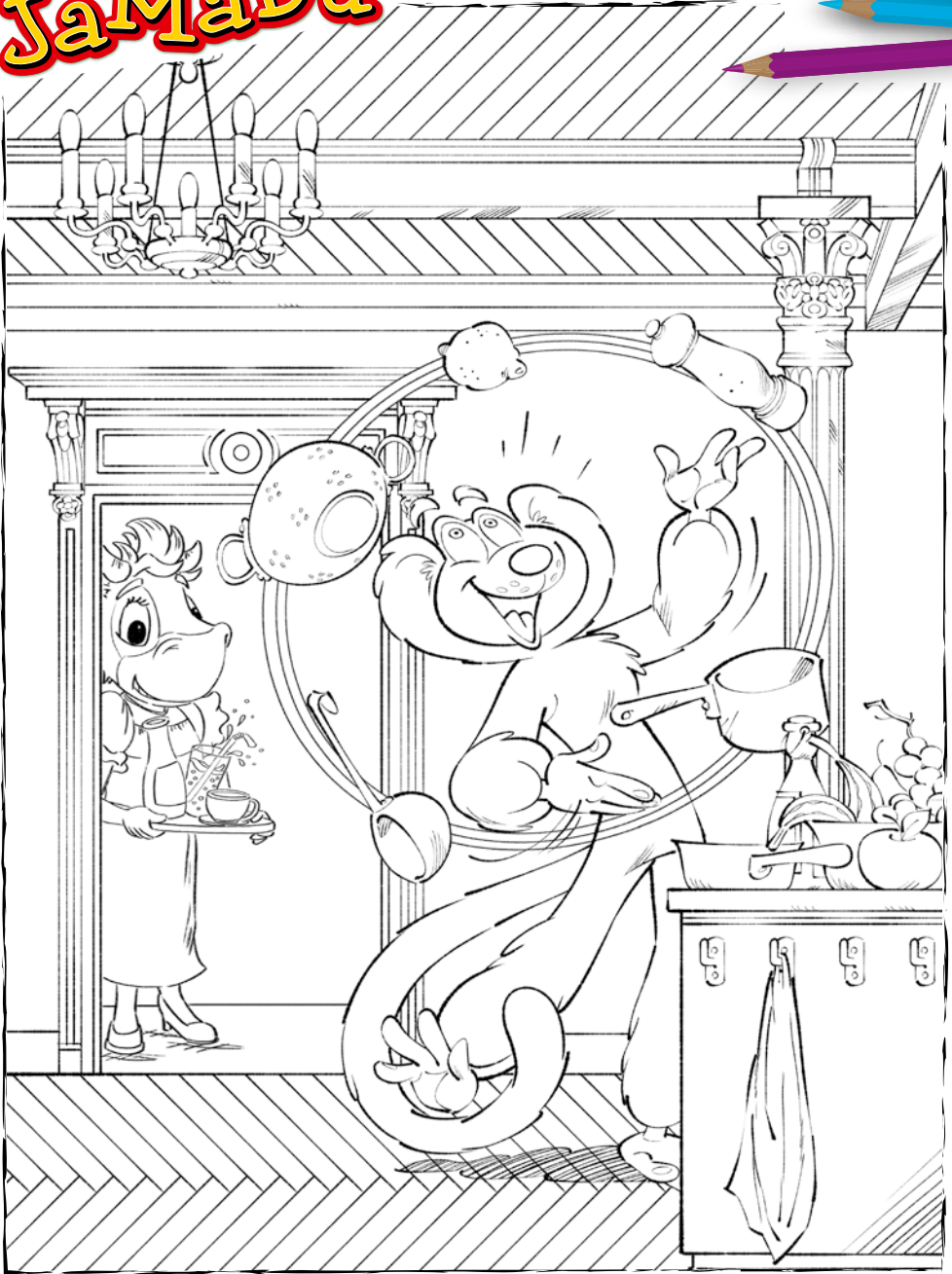


Draw Lily's hare friend

Lily's hare friend is in the restaurant helping with the cooking, as the hungry guests on the Schynige Platte want something tasty to eat and drink. Look at each field and copy it carefully in the empty square of the grid below. Have fun!



JaMaDu



There's loads going on at the Schynige Platte Restaurant, so JaMaDu is helping out in the kitchen. Can you colour the picture in, please? Have fun!

